

VIMOMA

Experience design and nature conservation via Visitor Monitoring and Management in protected areas

10.11.2023

Juraj Švajda

juraj.svajda@umb.sk

Visitor Impact Monitoring in Protected Areas

- Visegrad Fund

umb MATEJ BEL UNIVERSITY



This project has received funding from the Visegrad Fund under grant agreement No. 22210176



Outline

Introduction (benefits of tourism to PAs, negative impacts on the nature and visitors, alternative approaches to mass tourism)

Theoretical background (impacts to resources, experiences and facilities / services, different management strategies, practices and concepts)

Methods (ecosystem approach, adaptive management, framework for visitor impact monitoring)

Practical implications (case studies)

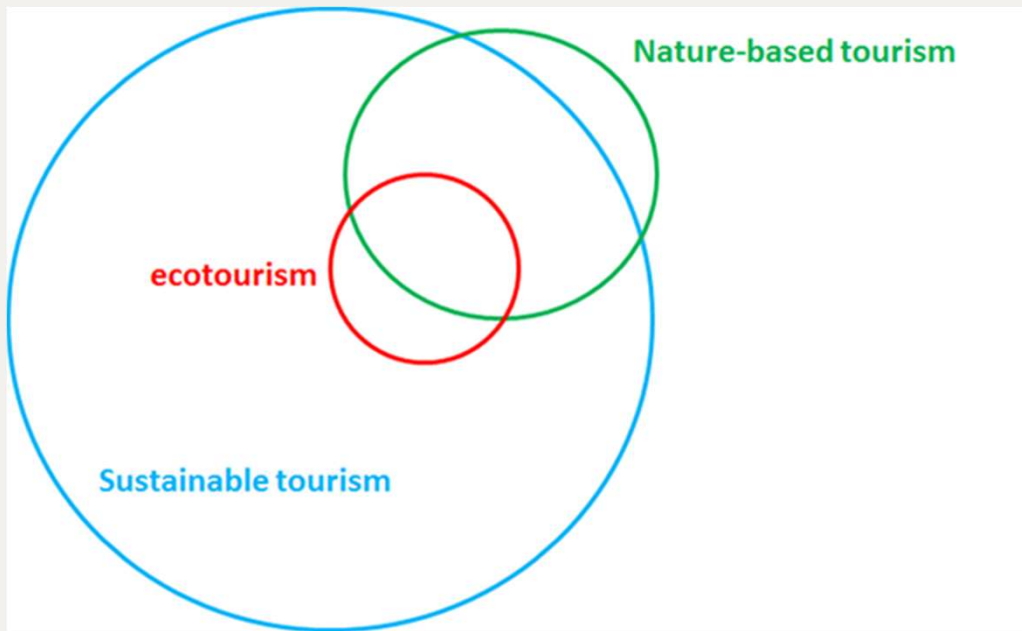


- **Economic Growth**
- **Conservation Funding**
- **Awareness and Education**
- **Community Engagement**
- **Research and Monitoring**

- **Environmental Degradation**
- **Overcrowding and Congestion**
- **Resource Consumption**
- **Pollution and Waste**
- **Cultural and Social Impacts**
- **Wildlife Disturbance**



Ecotourism / nature-oriented tourism as an alternative to mass tourism





Main challenges and impacts associated with outdoor recreation in NPs



- Impacts to Resources**
- ✓ Soil
 - ✓ Vegetation
 - ✓ Water
 - ✓ Wildlife
 - ✓ Air
 - ✓ Natural Quiet
 - ✓ Natural Darkness
 - ✓ Historical & Cultural Resources

- Impacts to Facilities/Services**
- ✓ Attraction Sites
 - ✓ Trails
 - ✓ Campgrounds & Campsites
 - ✓ Roads & Parking
 - ✓ Interpretive Facilities & Programs

- Impacts to Experience**
- ✓ Crowding
 - ✓ Conflict
 - ✓ Depreciative Behavior



© Manning & Anderson, 2012

Possible management strategies and practices



Limit Use

- ✓ Alternative Sites and Times
- ✓ Set Capacity
- ✓ Require Fee
- ✓ Limit Group Size
- ✓ Zoning
- ✓ Sanctions

Increase Supply

- ✓ Infrastructure Development
- ✓ Visitor Information & Communication
- ✓ Visitor Services

Reduce Impact of Use

- ✓ Education and Outreach
- ✓ Trail Management
- ✓ Waste Management
- ✓ Restoration and Rehabilitation
- ✓ Monitoring and Research

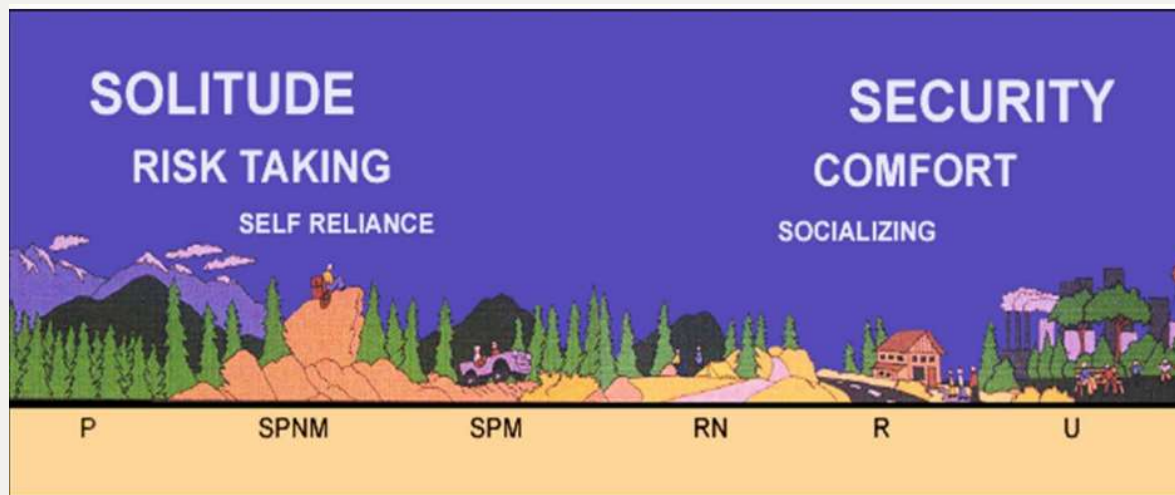
Harden the Resource/Experience

- ✓ Designated Viewing Areas
- ✓ Visitor Use Management Techniques
- ✓ Interpretive Signage
- ✓ Technology Solutions

———— Different concepts in visitor regulation and sustainable tourism support

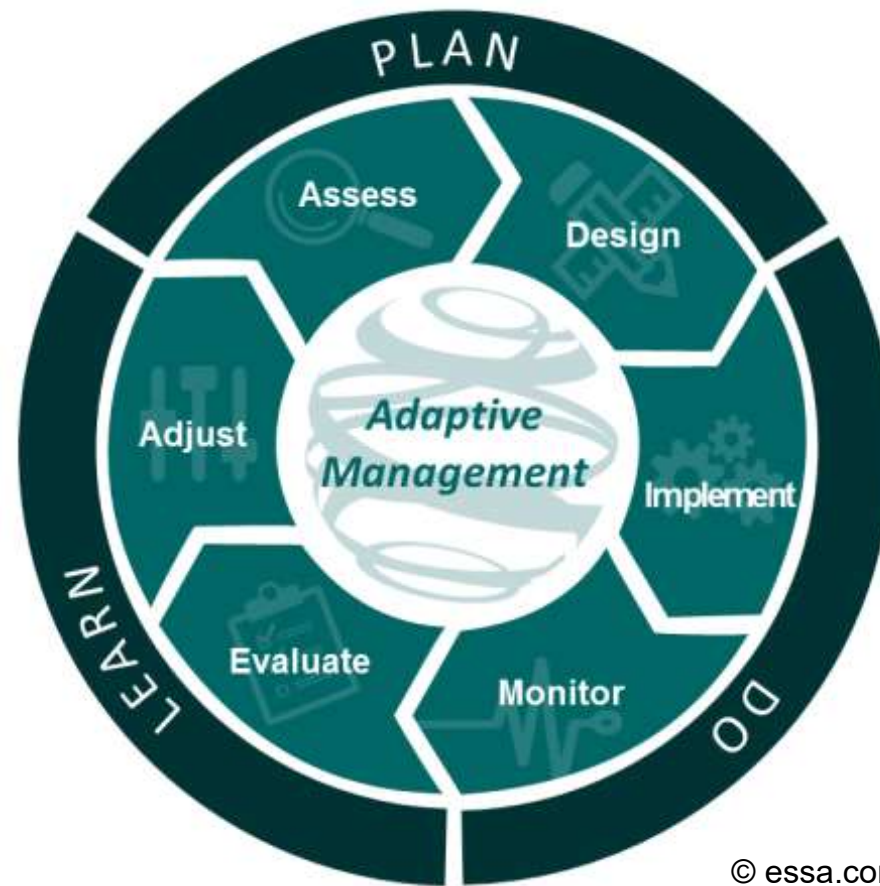


- ✓ *Limits of Acceptable Change (LAC)*
- ✓ *Visitor Impact Management (VIM)*
- ✓ *Visitor Experience and Resource Protection (VERP)*
- ✓ *Recreation Opportunity Spectrum (ROS)*



© USDA Forest Service

Ecosystem approach and Adaptive management



© essa.com

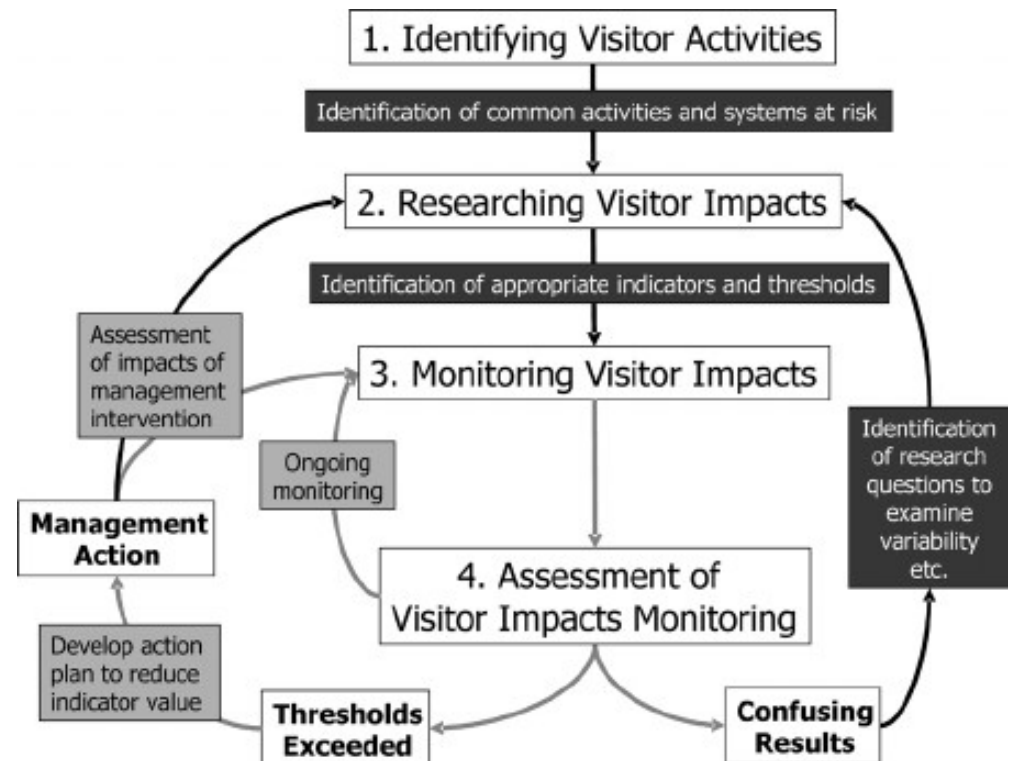
VIMOMA – Final conference

10/11/2023

Benefits of measurement



- *performance evaluation (KPIs)*
- *goal settings and progress tracking*
- *data-driven decision-making*
- *identifying trends and patterns*
- *accountability and transparency*

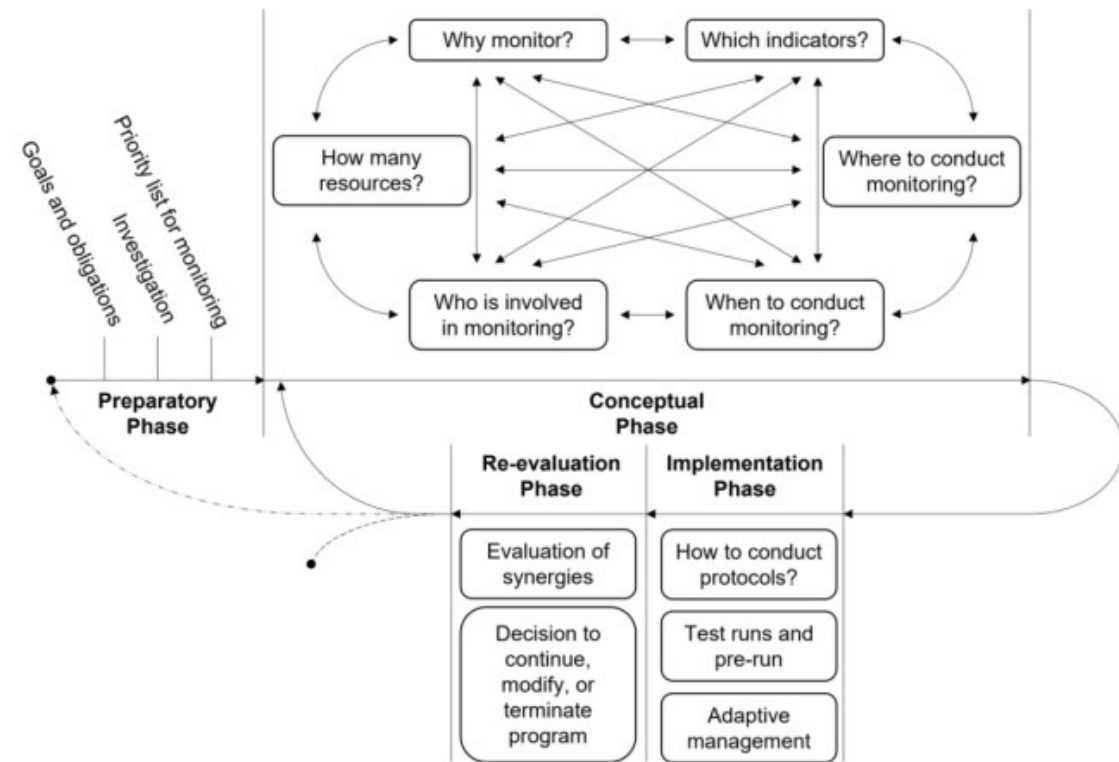


© Hadwen et al. 2008

Key components to establish a conceptual framework & methods for VM

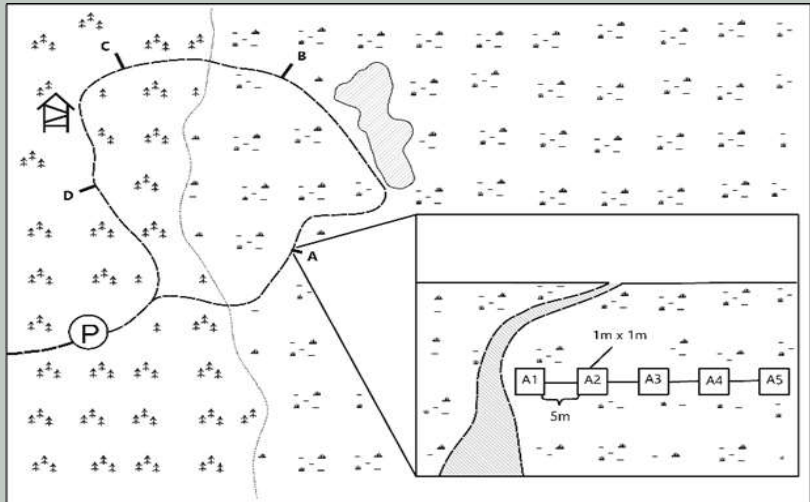


- *Identify monitoring objectives*
- *Select indicators*
- *Establish a baseline*
- *Design monitoring methods*
- *Develop data collection protocols*
- *Analyze and interpret data*
- *Communicate and report*
- *Adapt management strategies*

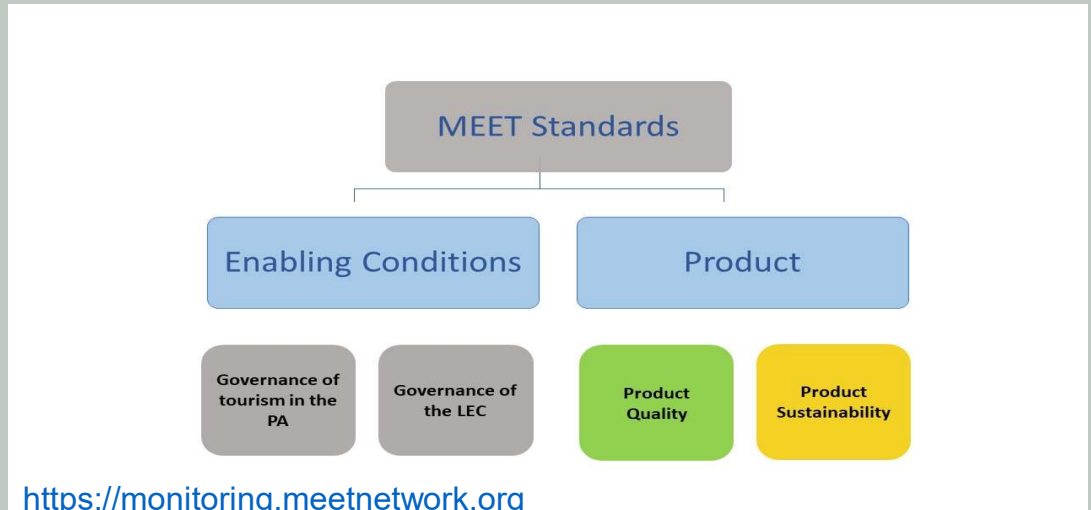


© Dalton et al. 2023

Practical implications



<https://getdiv.wordpress.com>



<https://monitoring.meetnetwork.org>

Lessons learned / Take home messages



- ✓ *Balance between sustainable tourism and conservation of natural resources*
- ✓ *You can't manage what you don't measure*
- ✓ *Monitor not only negative impacts but also positive*
- ✓ *Think more holistically and be proactive - offer and shape suitable destinations and products in advance*

